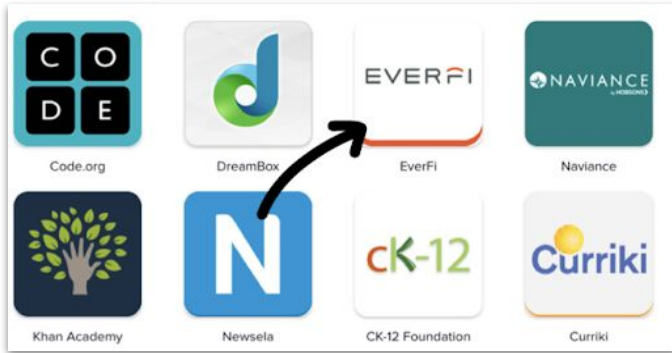
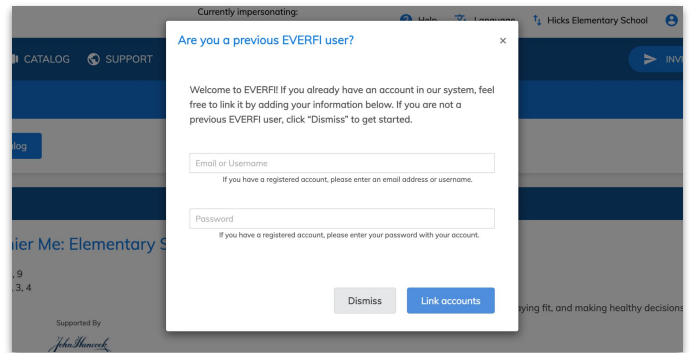


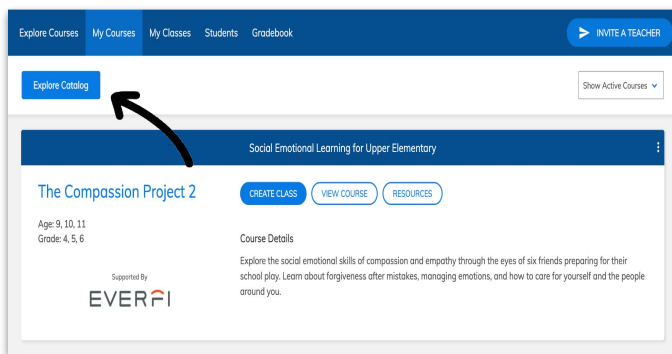
Educator Quick Start Guide - Existing



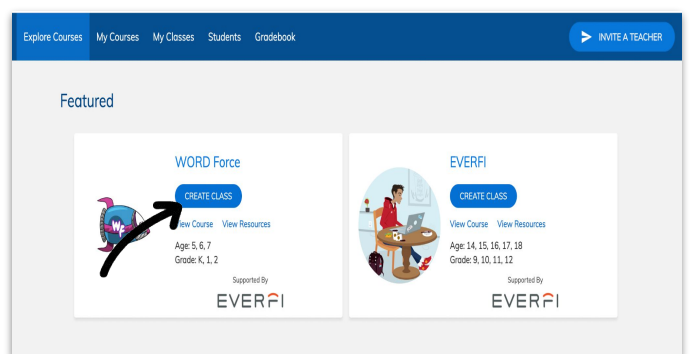
1 Select the EVERFI app on your SSO homepage or district portal.



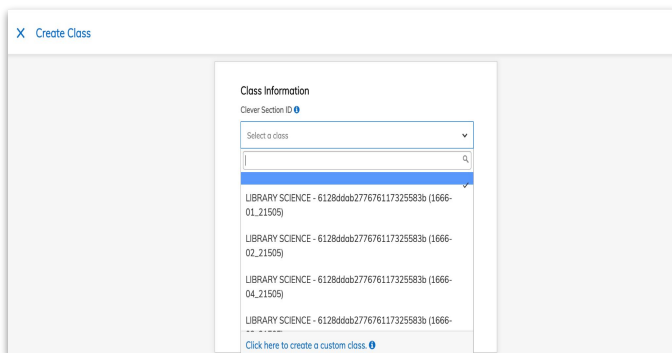
2 Already have an EVERFI account? Link your accounts when you receive the pop up by entering your email and password



3 Select the “Explore Courses” or “Explore Catalog” button to view the available courses.



4 Select “Create Class” on the course that you would like to use with your students.



5 Select the desired section/class, answer the prompts, add any additional courses to the section/class, and click “Create.”

Next Steps

- Students have immediate access once they log in through your district’s portal..
- The **Gradebook** tab tracks student progress (they must log in first).
- The **Resources** button hosts lesson plans, vocabulary guides, curriculum outlines and more.
- Click on the **Help** tab to find contact information for your local EVERFI Implementation Specialist.